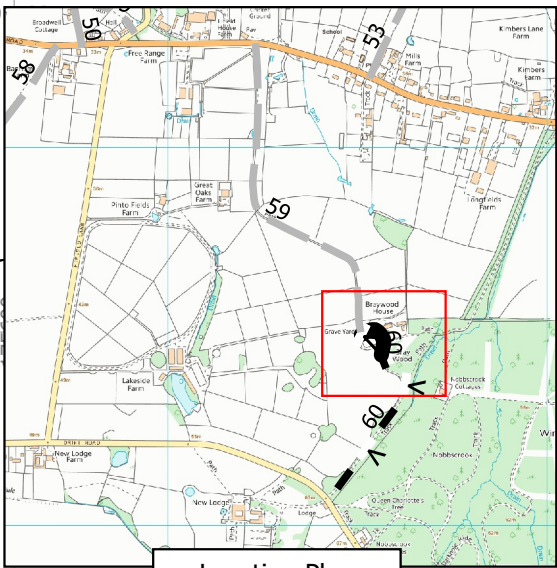
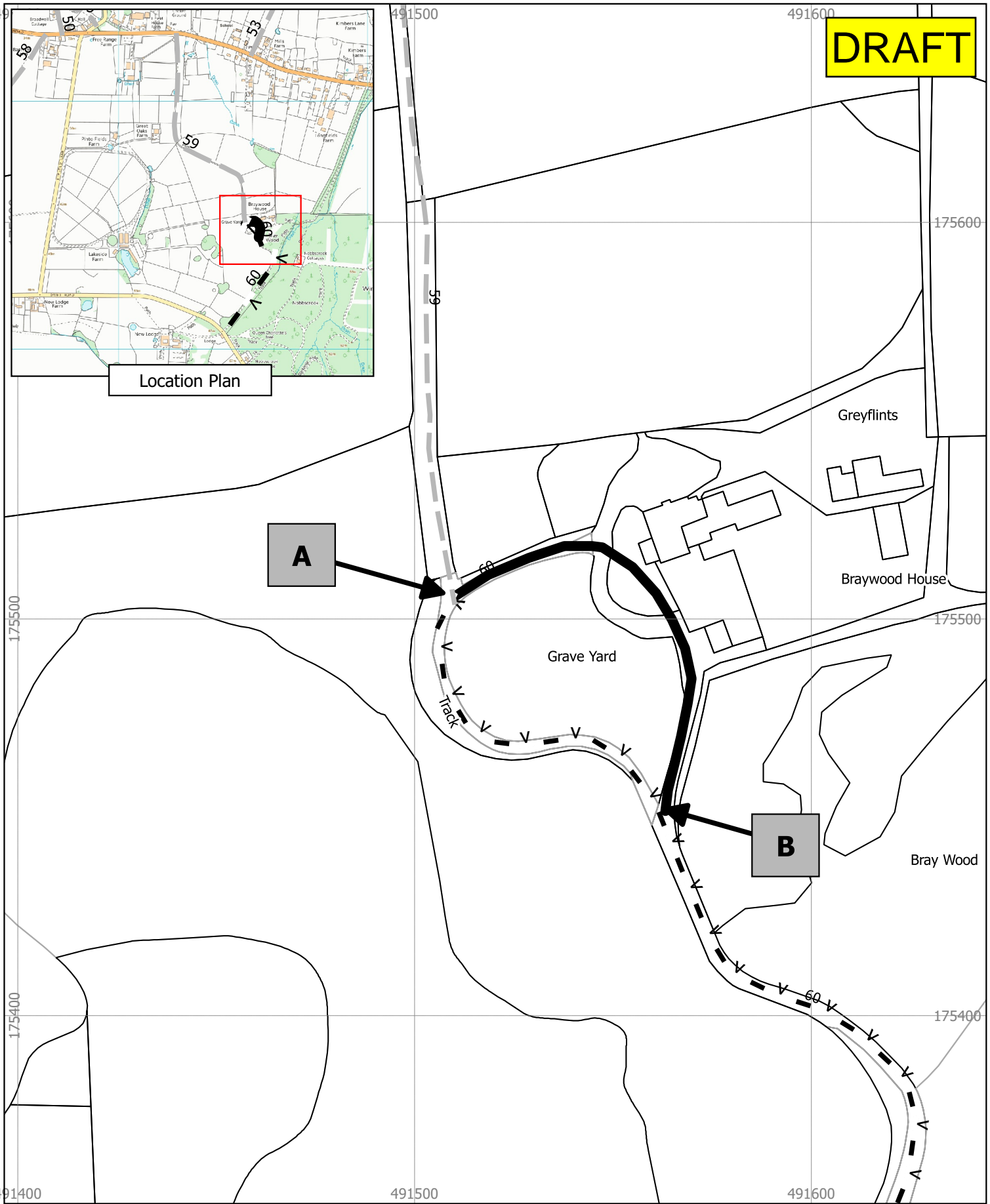


DRAFT



Location Plan






A

B

Public Rights of Way
Drawn by: Andrew Fletcher

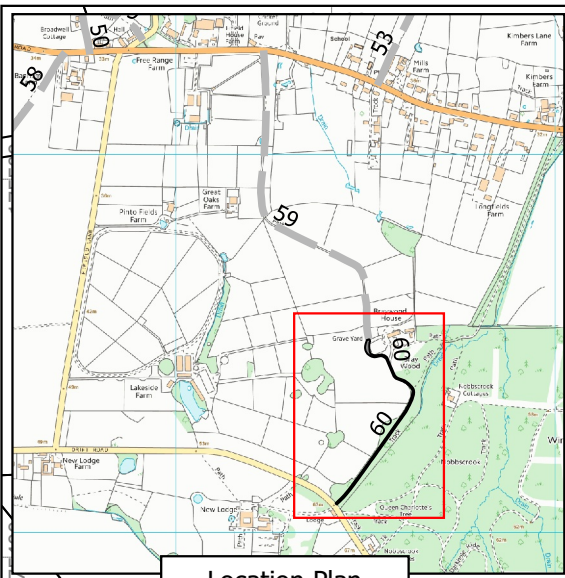
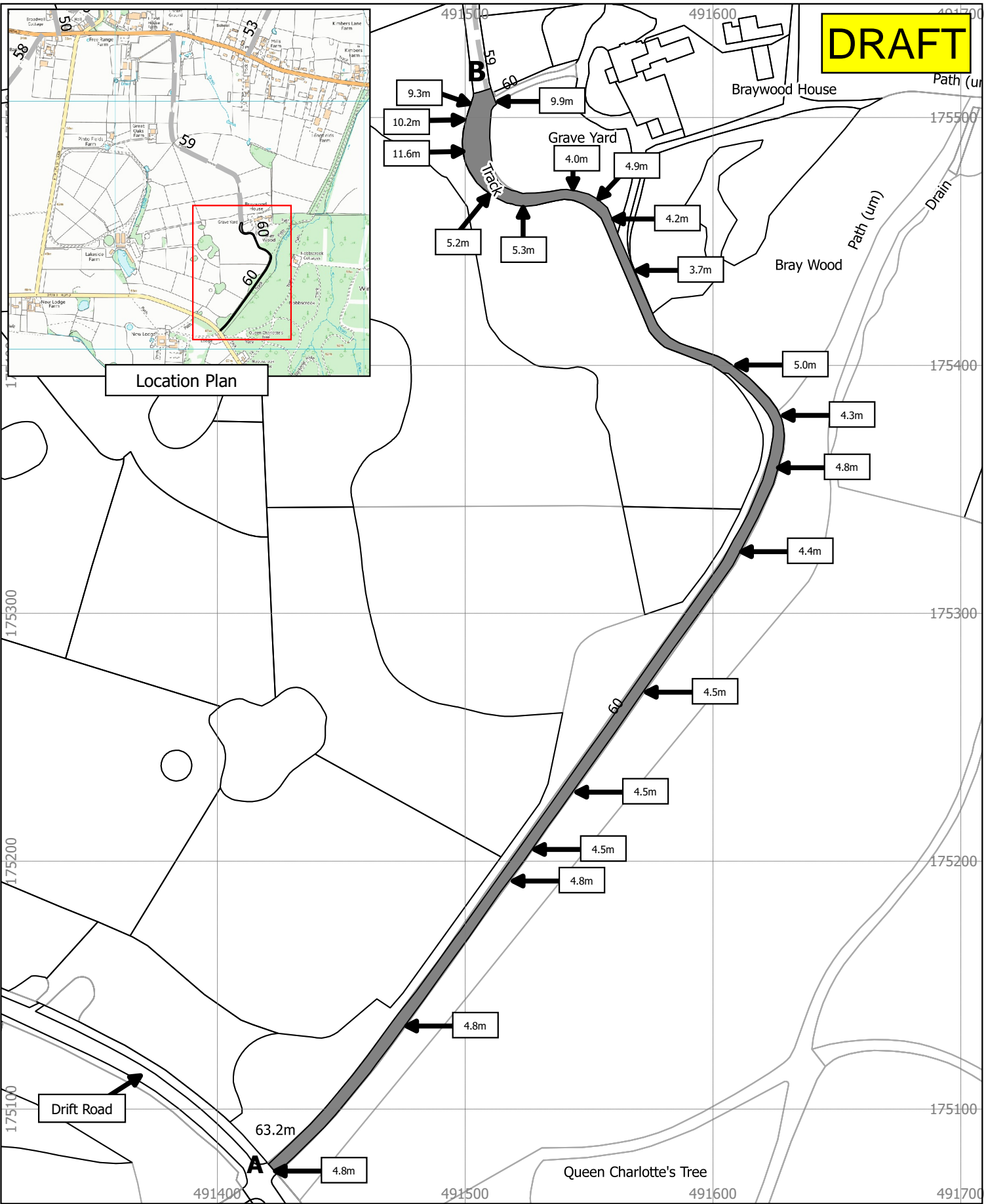
Date: 13/11/2014
Scale: 1:1,250

**Highways Act 1980 - Section 118
Bray Restricted Byway 60 (Part) Extinguishment Order 2015
RBWM036**

-  Section of Restricted Byway to be extinguished
-  Section of Restricted Byway unaffected by the Order
-  Footpaths unaffected by the Order



DRAFT



Location Plan

Public Rights of Way
 Drawn by: Andrew Fletcher
 Date: 13/11/2014
 Scale: 1:2,000

Wildlife and Countryside Act 1981
Bray Restricted Byway 60 Definitive Map Modification Order 2015
RBWM037

- Bray Restricted Byway 60
- Other paths unaffected by the order

